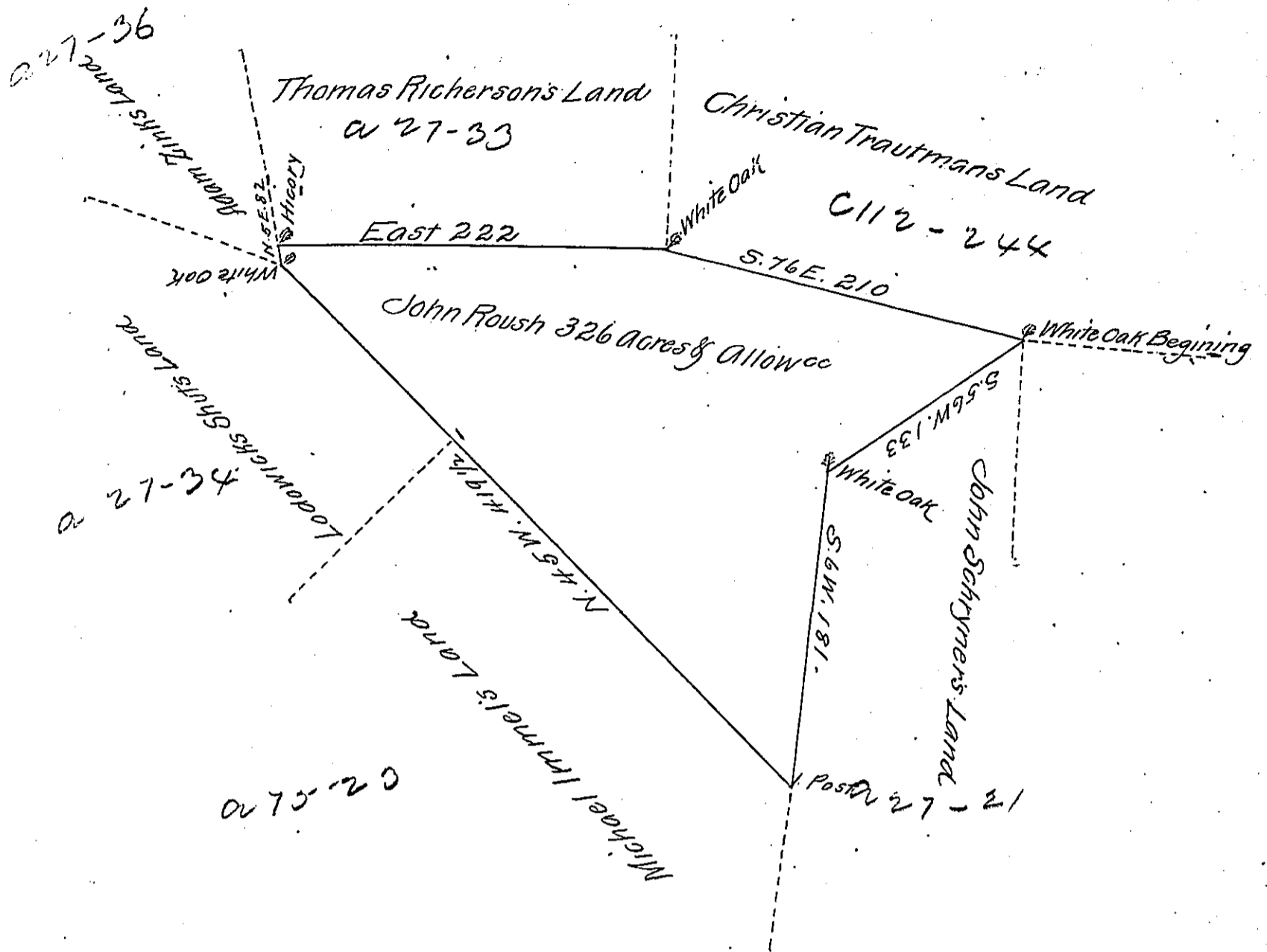


FORM No. 1.



The Draught of a Tract of Land called \_\_\_\_\_ Situate in Bald Eagle Township in Northumberland County, Containing Three hundred and Twenty Six acres with the usual allow<sup>ce</sup> of Six acres p Cent for Roads &c<sup>a</sup> Surveyd the 18th day of August 1773 in pursuance of a Warrant from the Hon<sup>ble</sup> the Proprietaries to John Roush, Bearing Date at Philadelphia the 6<sup>th</sup> Day of Jan<sup>y</sup> 1773.

p Wm Maclay

To John Lukens Surveyor General  
of the Province of Pennsylvania

IN TESTIMONY that the above is a copy of the original remaining on file in the Department of Internal Affairs of Pennsylvania, made conformably to an Act of Assembly approved the 16th day of February, 1833, I have hereunto set my Hand and caused the Seal of said Department to be affixed at Harrisburg, this—Twenty first—day of—July—1910

Henry Houch  
Secretary of Internal Affairs.